



NE^XIGEN

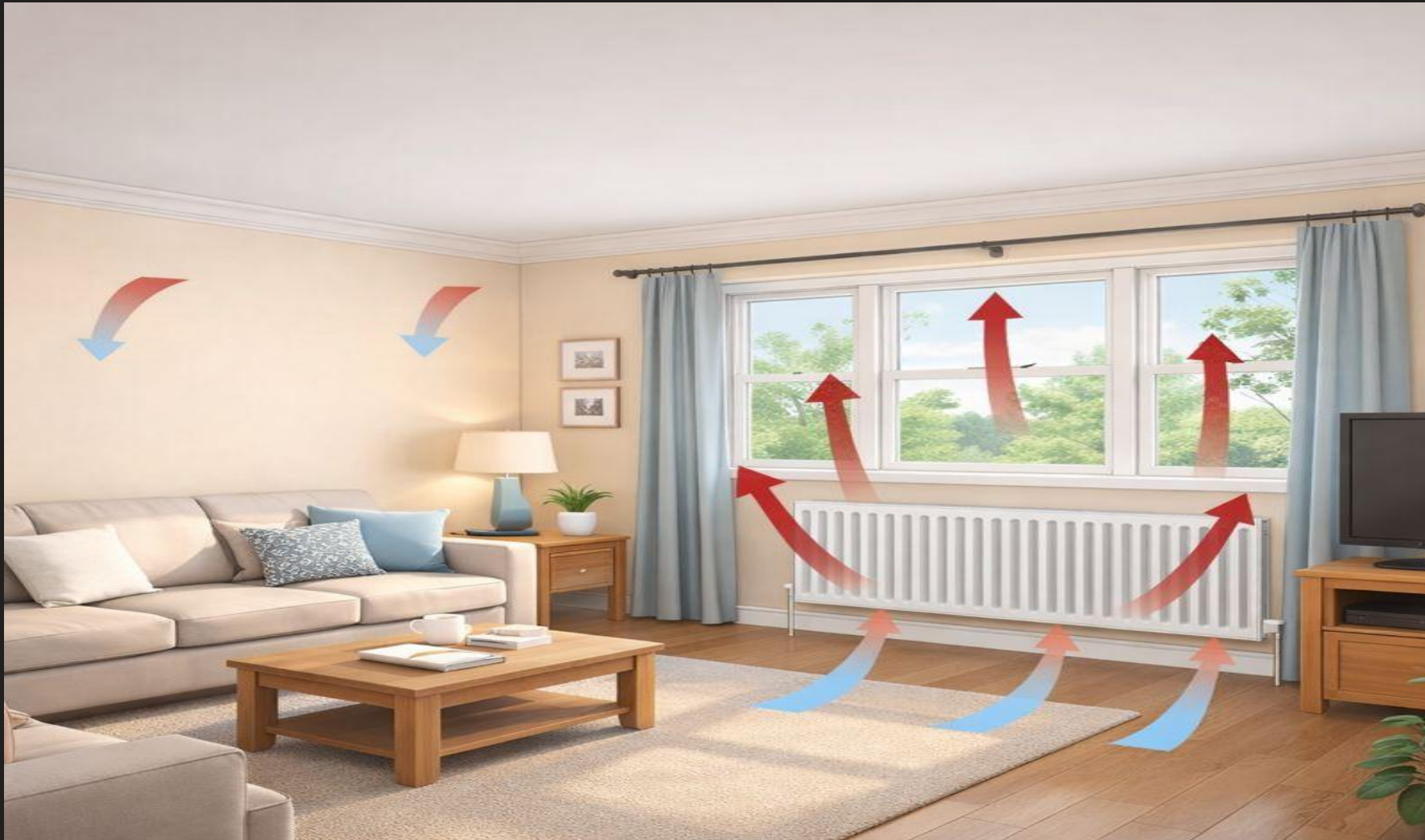
Far Infra-Red Heating

Introducing NexGen – World's First '3D' heating system using Far Infra-Red

NexGen is an Electric Graphene Ceiling paper designed to efficiently heat homes and buildings using Far Infra-Red (IR) wavelengths. The IR technology delivers unique heating emittance, 70%+ IR radiant & 30% conductive. The Company's innovative solution is an ultra safe, low voltage, low-temperature system, precisely engineered to emit Far Infra-Red waves that replicate the radiant and comfortable warmth of sunshine.

NEXGEN CAN BE FITTED ON WALLS , FLOORS & CEILINGS





The Challenge of Convection Heating

With the poorest housing stock in Europe.

Disadvantages;

Rapid Air Movement

Heated air rises to cold surfaces (windows, doors, external walls), creating circulation that distributes dust and airborne particles throughout the room.

Slow Warm-Up

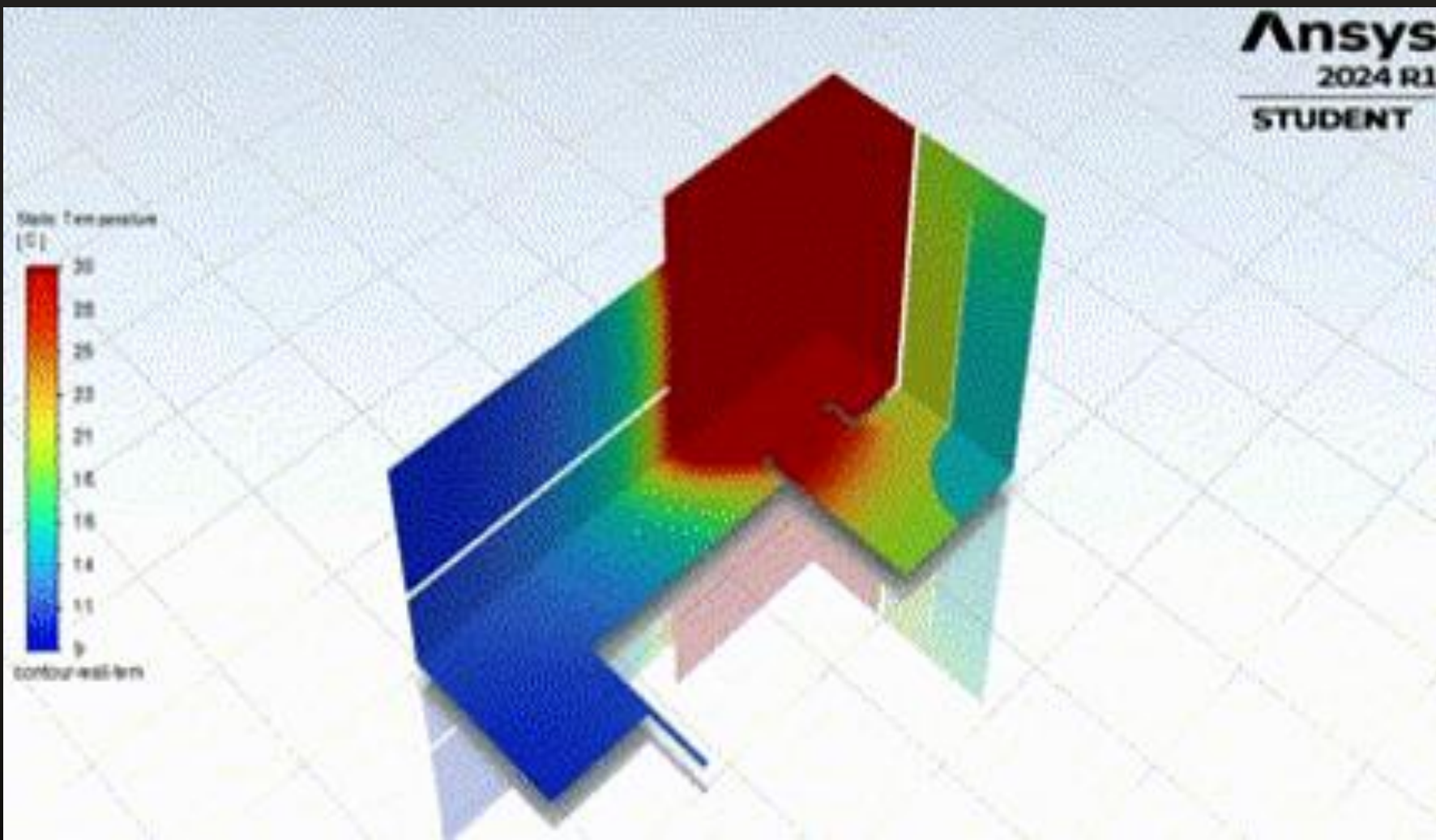
Heat pump radiators are often oversized to compensate for lower water temperatures, causing rooms to take hours to reach comfortable temperatures.

Uneven Heat Distribution

Radiators create cold spots and temperature gradients, failing to heat entire rooms consistently.

Poor Heat Retention

Rooms cool rapidly when heating is turned off, particularly in poorly insulated properties with frequent air changes.





The solution to the challenge

Large Surface Area, Low Voltage & Temperature Far Infrared Advantages;

Fast Warm-Up

Infrared warmth felt within 4-5 minutes of system activation. Insulated product ranges amplify this further.

Even Heat Distribution

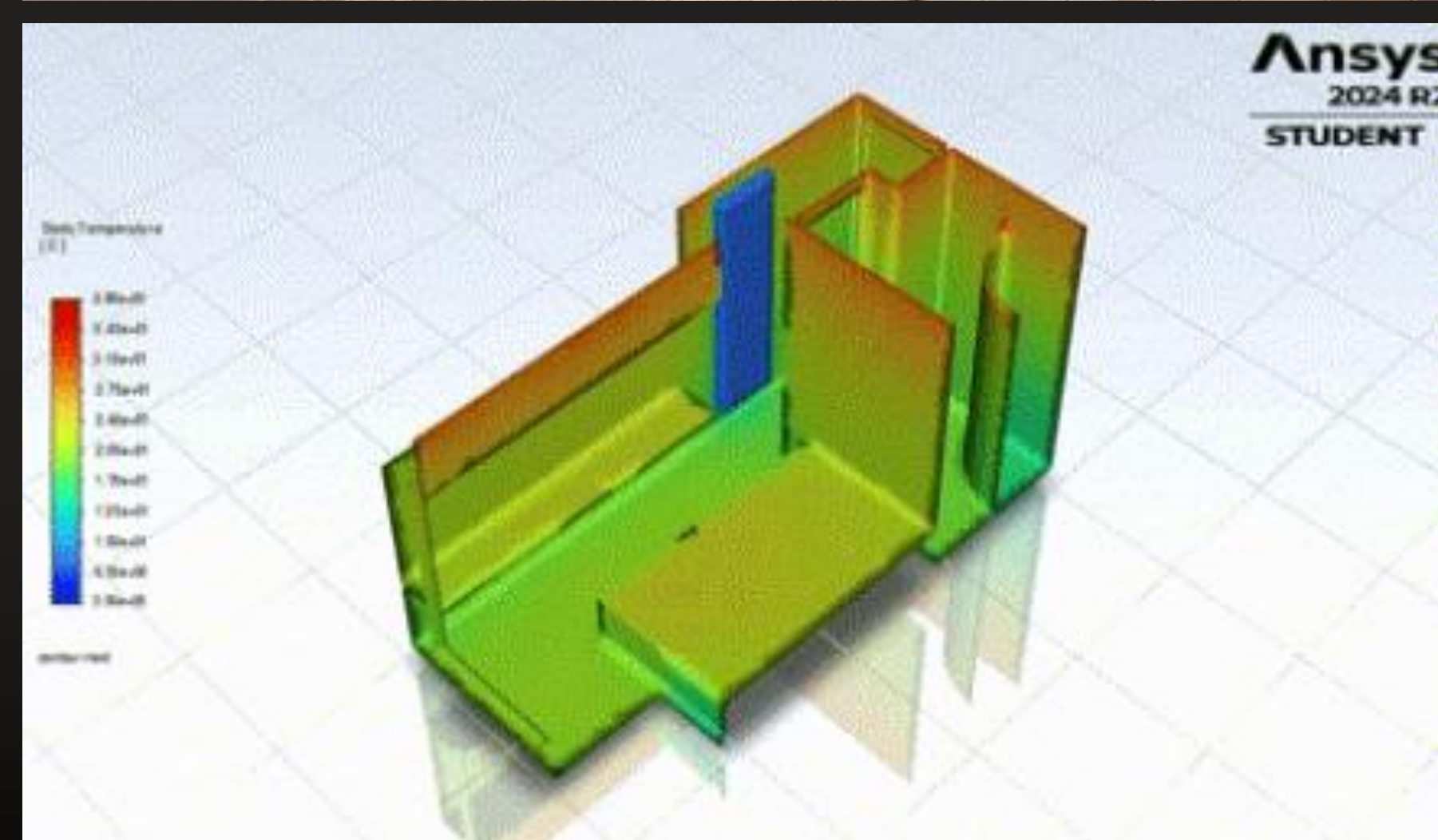
80-90% ceiling coverage provides uniform warmth throughout the room, eliminating cold spots and helping prevent damp and mould.

Long-Lasting Heat

Energy saturates into fabric and objects, storing and re-emitting heat through conduction. Maintains warmth even in poorly insulated properties and isn't as affected by air changes.

Safe & Seamless

Ultra-low voltage and low surface temperature, integrated invisibly into ceiling finish. No pipework or bulky radiators consuming wall space.





Combining NexGen with Renewables

Clean efficient heat delivered from solar to battery solutions

The Decarbonisation Puzzle

Solar PV

Renewable energy generation to power the heating system and reduce grid dependency.

Battery Storage

Energy storage systems that deliver low-cost off-peak electricity during peak demand periods and store surplus solar generation for subsequent re-consumption.

Smart Hot Water

Successfully paired in multiple projects with thermal hot water solutions. Ideal for small occupancy flats and houses that don't require a tank.

Smart Grid Trading

Grid balancing and trading software, optimised buying and selling of excess energy from the solar PV, leveraging the Virtual Power Plant value of thousands of batteries with grid/utilities.

Combined Result

Integrated technologies delivering near Net-Zero performance, reducing carbon emissions while protecting residents from rising energy costs. These solutions can be provided as a full package by NexGen to deliver whole house decarbonisation from one supply contract.



The Result - Presence Heating

NexGen delivers high-output far-infrared heating that outperforms conventional systems by providing direct, targeted warmth across a large surface area. Instead of overheating entire buildings and wasting energy, NexGen focuses on heating the people and spaces that matter most—dramatically improving efficiency and reducing unnecessary CO₂ emissions. With flexible room-by-room control via in-room thermostats or a smart app, NexGen adapts seamlessly to both homes and workplaces, ensuring comfortable, responsive heating for occupied areas such as living spaces, desks, and work zones—without heating unused or empty spaces.

NexGen 1120
Maximum Power
Manual be

Product Details





NXG Infra-Red Ceiling Paper

The “core” of our technology.

What It Is?

Infrared ceiling paper engineered to emit the optimal wavelength that the human body absorbs naturally from sunlight.

How It Works?

Carbon Composite materials with copper strips (600mm width) operating at 24-36V, maintaining safe surface temperatures of 40-50°C.

Installation

Bonds to existing ceilings like wallpaper, with options for wall mounting or encapsulation behind paint/plaster. Delivered in wallpaper-like sheets of various lengths.

Best Applications

Well-insulated new builds and structures requiring bi-axial heating for warmth or material drying.

Manufacturing

Scaled production in Romsey, UK.



Ceiling Paper: Installation Overview

Trainable, scalable & repeatable

Installation Requirements

Trades Required

Decorator/wallpapering specialist for ceiling application + Electrician for cabling, connections, and power supply.

Process

Applied with temperature-rated wallpaper paste to existing ceilings. Circular apertures can be cut for sensors, lights, or ventilation. Finished with filler, then two coats of paint or skim plaster.

Electrical Setup

24V delivered to each heating element via crimp connectors, powered by a transformer wired into a fuse spur.

Cable Management

- Retrofits: Surface-mounted cabling concealed in trunking or coving
- New builds: Cabling hidden within ceiling void during first fix

Support Provided

NexGen supplies full specifications, all components, and schematic layout designs based on your survey and floor plan.



Insulated Ceiling Paper: Overview

Trainable, scalable & repeatable

Installation Requirements

Trades Required

Decorator/Dry Liner for heating mat application + Electrician for cabling, connections, and power supply.

Process

Bonded to existing ceiling surfaces (including Artex) using specialist adhesive and mechanical fixings. Circular apertures can be cut for sensors, lights, or ventilation. Finished with scrim tape, sanding, and two coats of paint.

Electrical Setup

24V delivered to each heating element via crimp connectors, powered by a transformer wired into a fuse spur.

Cable Management

- Retrofits: Surface-mounted cabling concealed in trunking or coving

Support Provided

NexGen supplies full specifications, all components, and schematic layout designs based on your survey and floor plan.



Post Installation

Safe, clean & seamlessly integrated into a home

Invisible Heat

Rooms show only thermostatic controls—the heating system itself is completely hidden from view.

Protected & Quiet

Ceiling-mounted installation keeps components out of reach and safe from damage. No moving parts, liquids, or gases means completely silent operation.

Space Saving

Eliminates bulky radiators and pipework, freeing up floor space and allowing flexible room layouts.

Self-Contained

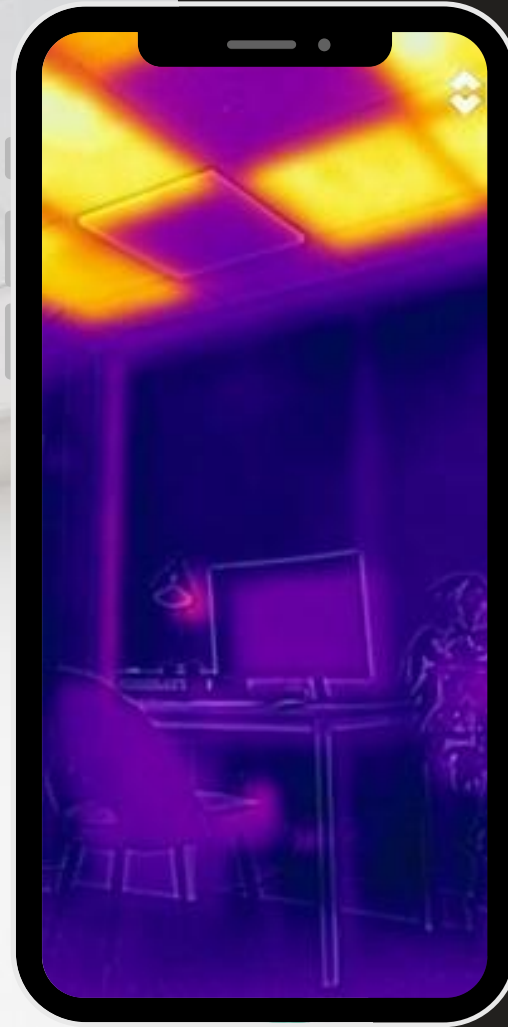
All components integrate within the existing structure—no external units or space requirements beyond the ceiling itself.

Minimal Maintenance

Zero annual servicing required. 15-year guarantee on heating elements, with likely inclusion in 3 or 5-year EICR testing.

Long-Lasting Durability

Nano-graphene composite materials remain stable and efficient through multiple paint applications over decades.



NXG Infra-Red Ceiling Tiles

A simple, integrated & reusable heat source.

What It Is

Plug-and-play infrared heating tiles (595 x 595 x 25mm) designed for suspended ceiling frameworks, engineered to emit the optimal wavelength that the human body absorbs naturally from sunlight.

How It Works

Core ceiling paper technology combined with 25mm phenolic insulation for rapid, direct warmth. Operates at 24-30V with safe surface temperatures of 45-55°C.

Installation

Fits into existing suspended ceiling grids with electrical feeds between tiles. ULV cabling hidden within ceiling void. Zonal and combined control options tailored to space occupancy.

Best Applications

Any space with suspended ceiling framework up to 2.8m height.

Manufacturing

Scaled production in Romsey, UK.



NXG Infra-Red Ceiling Tiles

A simple, integrated & reusable heat source.

What It Is

Plug-and-play infrared heating tiles (595 x 595 x 25mm) designed for suspended ceiling frameworks, engineered to emit the optimal wavelength that the human body absorbs naturally from sunlight.

How It Works

Core ceiling paper technology combined with 25mm phenolic insulation for rapid, direct warmth. Operates at 24-30V with safe surface temperatures of 45-55°C.

Installation

Fits into existing suspended ceiling grids with electrical feeds between tiles. ULV cabling hidden within ceiling void. Zonal and combined control options tailored to space occupancy.

Best Applications

Any space with suspended ceiling framework up to 2.8m height.

Manufacturing

Scaled production in Romsey, UK.



NXG Infra-Red Ceiling 'MEGA' Tiles

A simple, integrated & reusable heat source.

What It Is

Plug-and-play infrared heating panels for suspended or ceiling-bonded mega tiles available in various sizes, engineered to emit the optimal wavelength that the human body absorbs naturally from sunlight.

How It Works

Core ceiling paper technology combined with 25mm phenolic insulation for rapid, direct warmth. Operates at 24-30V with safe surface temperatures of 45-60°C.

Installation

Installed directly surface-mounted onto existing ceilings with or without frameworks, with electrical feeds and connections between panels. ULV cabling hidden within the ceiling void. Zonal and combined control options tailored to space occupancy.

Best Applications

Any application with a suitable ceiling up to heights of 3.0 meters.



NXG Infra-Red Suspended Rafts

Revolutionising comfort warmth in open space

What It Is

Targeted Infrared heating panel with integrated LED lighting, engineered to emit the optimal wavelength that the human body absorbs naturally from sunlight. Designed for individuals in wide open or difficult-to-regulate spaces.

How It Works

Core IR heating technology with 25mm phenolic insulation and aluminium framework. Operates at 30 or 36V with safe surface temperatures of 45-65°C.

Installation

Suspended or mechanically fixed. Plug-and-play via 240V socket or hardwired into fuse spur. Fully modular for linking multiple units.

Available Sizes

2400 x 1400 x 150mm or 2400 x 650 x 150mm.

Best Applications

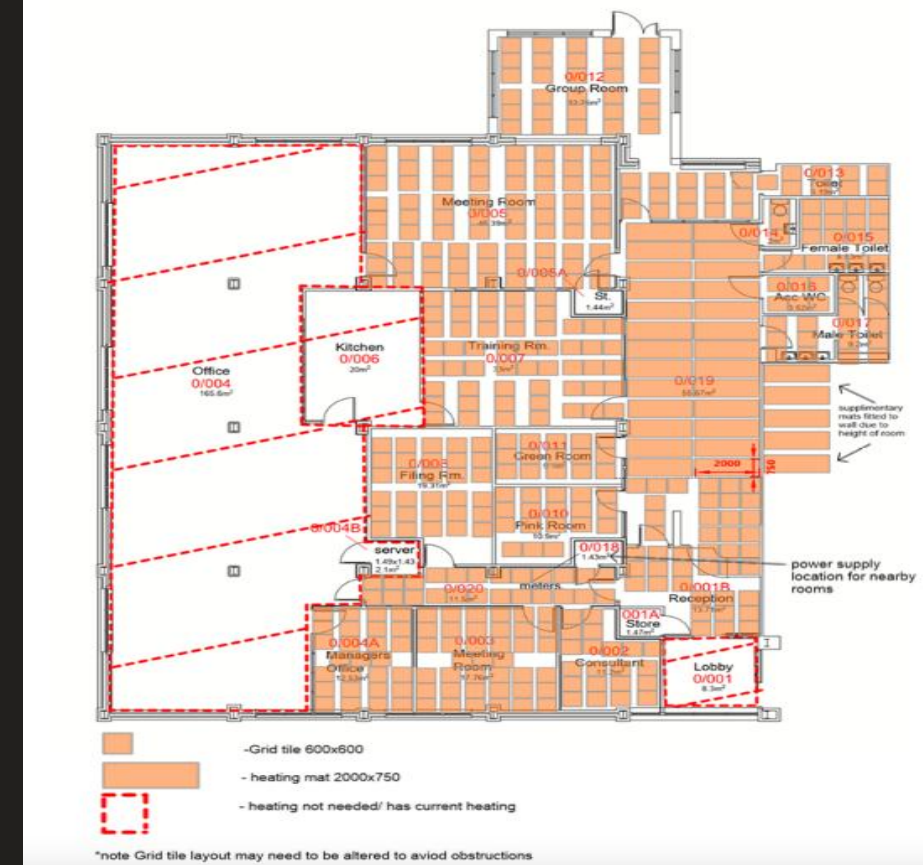
Direct warmth over workbenches in industrial facilities and warehouses, reception areas, atriums, meeting rooms, and retail spaces.

Our Support

Let us sweat the small stuff – NexGen will provide a pre-packed kit for the property unit-by-unit, and allocated room by room where possible, with a scaled schematic guide to follow during installation – Proudly manufactured in Romsey, Hampshire UK with access to worldwide markets.



- **What a NexGen system Includes:**
 - 3D Schematic illustrating heating panel positions & power supply requirements per room.
 - NexGen heating elements 'one-layer' system supplied pre-cut, with electrical connections applied ready for bonding to ceilings.
 - Transformers for each zoned section – normally one per room – for zonal operation
 - Thermostatic control and/or sensors for zoned heating
 - All associated cabling
 - All ceiling primer/sealant & adhesives



NexGen Heating System Specifications

Total Installed kW:
8.201kW
**Note this is the total installed Kw and does not represent actual consumption due to the cyclical heating cycles of NexGen Heating*

Electrical Load:
230v ~ 35.65 amps
240v ~ 34.17 amps

Heating Zones
Heating Zone 1: Living Room
PSU 2400w + 300w
Heating Zone 2: Kitchen
PSU 1200w
Heating Zone 3: Bedroom 1
PSU 1600w
Heating Zone 4: Bedroom 2
PSU 2400w
Heating Zone 5: Hallway & Bathroom
PSU 800w x 2



The logo for NEXGEN, featuring the word 'NEXGEN' in a bold, sans-serif font. The 'NEX' part is black, and the 'GEN' part is orange. A small orange circle is positioned above the 'X'.

Oliver Olsson

Head of Sales

+44 7825 395 812

Oliver@NexgenHeating.com

SocialHousing@NexgenHeating.com

Commercial@NexgenHeating.com

www.NexgenHeating.com